

KC-20.11.6HL

Requested data

Flow	0 l/s
Head	0 m
Fluid	
Pumpe type	Single head pump
No. of pumps	1

Operating pump data

Flow	
Head	
Shaft power	
Efficiency	%
Head H(Q=0)	5,93 m
Discharge connection	100 mm
Installation	Submersed automatic coupling
Impeller	Single channel
Free passage	80 mm

Motor data

Frequency	50 Hz
Rated voltage	400 V
Nominal speed	980 1/min
Number of poles	6
Rated power P2	1,1 kW
Rated current	2,8 A
Motor type	3~
Insulation class	F
Degree of protection	IP 68

Operating limits

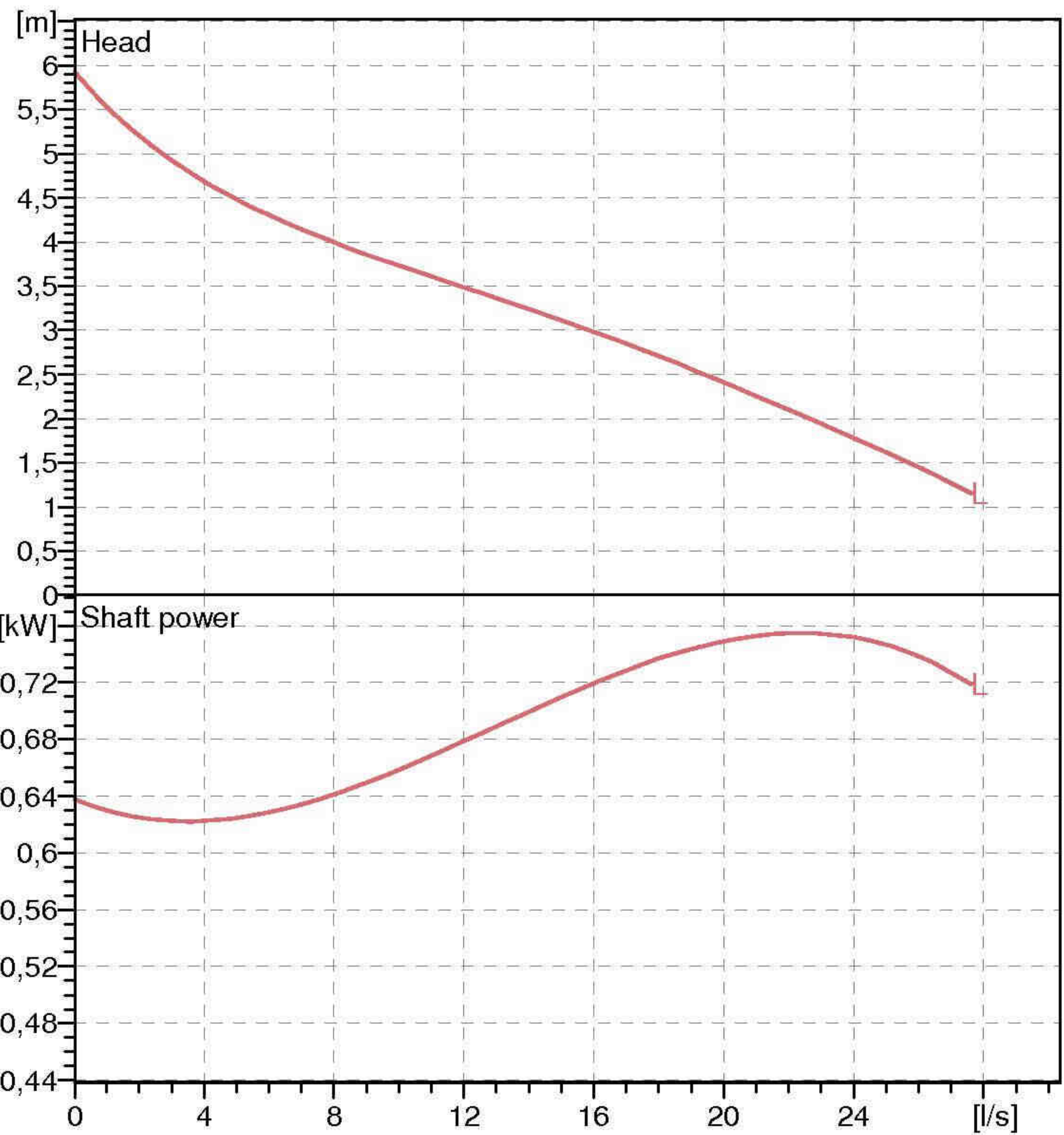
Starts per hour max.	20
Maximum temperature of pumped fluid	40 °C
Max. Density	998 kg/m ³
Max. viscosity	1 mm ² /s

General data

Weight	68 kg
--------	-------

Materials

Pump casing	Grey cast iron
Impeller	Grey cast iron
Wear ring	Steel/rubber
Suction casing	Grey cast iron
Mech. seal on pump side	Silicon carbide/Ceramics
Oil chamber	Grey cast iron
Motor casing	Grey cast iron
Shaft	Stainless steel
Thermal probes	Yes
Conductivity probe	Yes
Mech. seal on motor side	Graphite/Ceramics
Handle	Stainless steel
Power supply cable	10m
Screws and nuts	Stainless steel



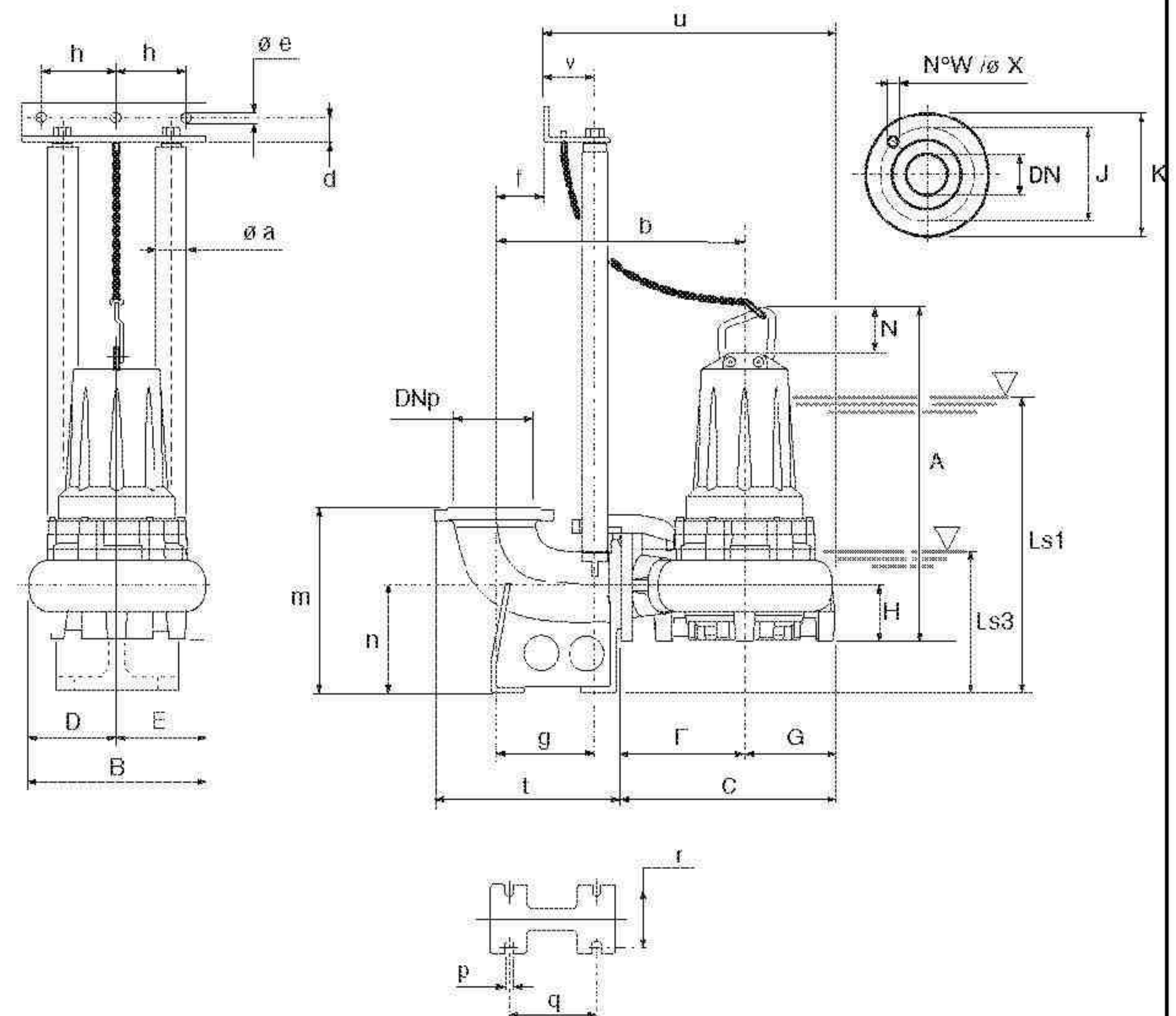
Operating data

ISO 9906 GRADE 2

Q [l/s]	H [m]	P [kW]	Eff. [%]	NPSH [m]

Dimensions mm

- A = 558
- a = ø2"
- B = 370
- b = 483
- C = 435
- D = 198
- d = 35
- DN = 100/PN16
- DNp = 100/PN16
- E = 172
- e = ø12,5
- F = 255
- f = 48
- g = 179
- G = 180
- H = 118
- h = 130
- J = 180
- K = 220
- Ls1 = 503
- Ls3 = 281
- m = 350
- n = 200
- N = 80
- øX = 18
- p = 18
- q = 186
- r = 135
- t = 338
- u = 615
- v = 102
- W = 8



Remarks: