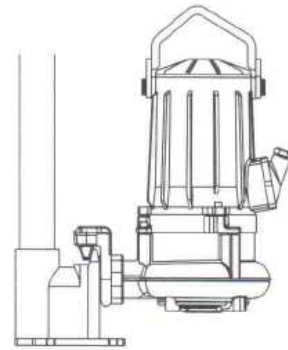


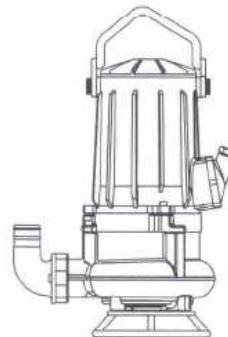
Impeller code	Type			Weight equipment (kg)
	Immersible	Portable	Dry	
44	•	•		48
71	•	•		
72	•	•		



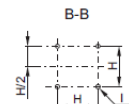
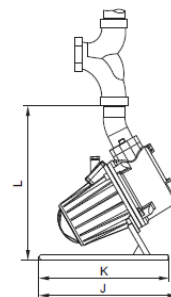
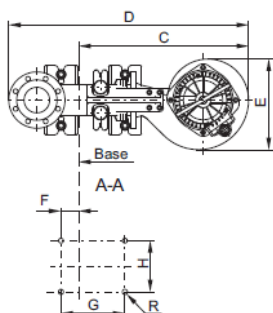
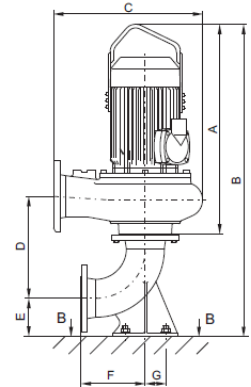
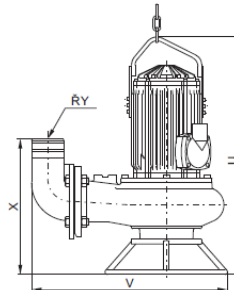
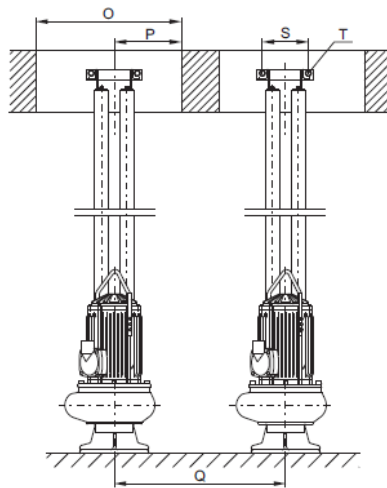
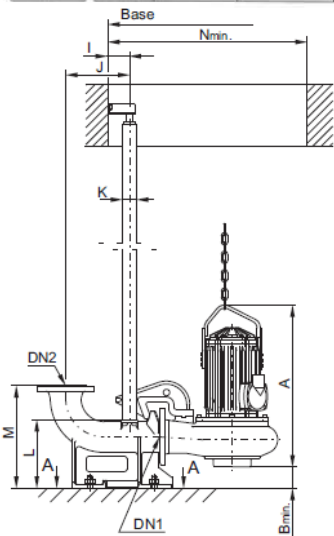
Immersible



Portable



Impeller code	Type	Force pipe connection (DN)	Free flow cross-section (Ø mm)	Rated power (kW)	Revolutions per minute (r.p.m)	Rated current consumption (A)	Starting current consumption (A)	Cos φ	Cable cross-section (mm²)
400 V, 50 Hz (400/230V)									
44	05.444	50 or 80	47	1,1	1400	2,8	9,8	0,75	1,5
71	05.471								
72	05.472								



Type	DN	A	Bmin	C	D	E	F	G	H	I	J	K	L	M	Nmin	O	P	Q	R	S	T	DN1	DN2
KD-05	50	515		410	470	230	33	100	105	85	75	3/4"	132	168	650	450		~450	M12	52	M10	50	50
KD-05	80	515		590	640	230	59	250	120	85	239	2"	260	400	750	450		~450	M16	195	M12	50	80